

# Desktop Instructions

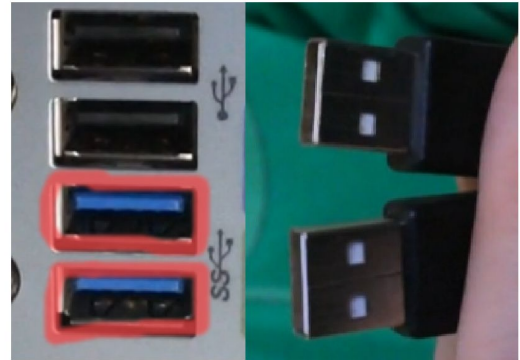
For detailed video tutorial visit:

[www.computers4people.org/setupmydesktop](http://www.computers4people.org/setupmydesktop)

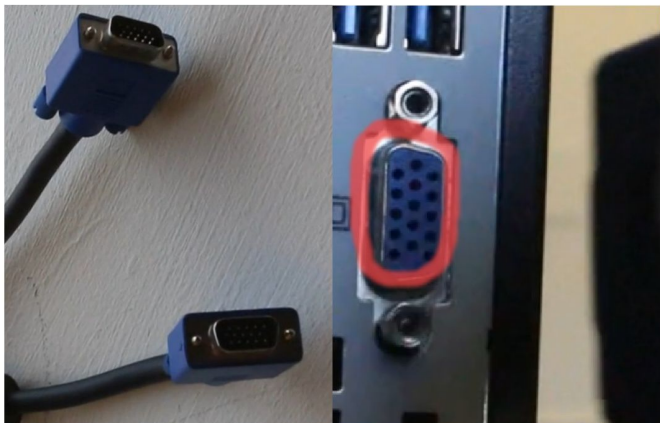
1. Setup computer, monitor, keyboard, & mouse as seen:



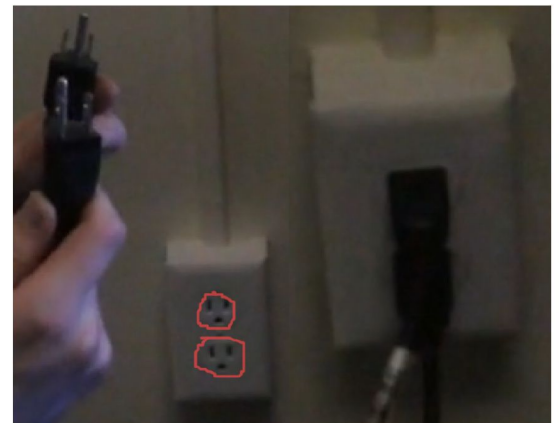
2. Plug the keyboard and mouse cables into the back of the computer.



3. Connect the (blue tipped) cable to the monitor and computer.



4. Plug both 3 prong power cords (black) into electrical outlets.



5. Plug the other end of each power cord into the monitor and computer.



6. Press power button on Desktop. Click globe to connect to WIFI.

